

Create  
Something  
Beautiful

**Tile***flair*  
Create Something Beautiful

# Stone

*Beautiful stone style in your home.*

Galiano Beige

# Stone Effect



Gorge White Muretto

*Through popular demand there is plenty of choice when it comes to natural stone effect tiles. Thanks to inkjet technology these designs are more life-like than ever, plus some interesting twists can be applied to natural design.*

## Natural stone effect

The beauty of natural stone is its rugged nature and the overall effect that it creates. But real stone is not all that practical and can be very expensive. Stone effect tiles on the other hand, are very durable, strong and need very little maintenance. They are more consistent in their colour and pattern and are easier to live with than some natural materials. Yet they still convey that rugged nature of their real counterparts.

Whatever your style preference, natural stone effect tiles, can create the impact you need in your home without the huge expense. Their versatility means that you can use them for flooring throughout your living space and outside area, a large expanse of wall or a small feature. Wherever you use it, natural stone effect looks fabulous.



Quantocks Steller



Moonstone Ivory

# Stone Effect

Eternal Almond



*Hardwearing, practical  
and versatile*

# Stone Effect

Bayeux White



## So much choice

Another huge benefit of stone effect is that there is a world of choice. There are so many different realistic designs to choose from: marble, travertine, quartz, limestone and slate wall and floor tiles in a variety of sizes to suit your décor.



Bayeux Silver



Vinaros Cloud Black

# Stone Effect

Roubaix Bone and Decor

## Marble effect

Add a touch of luxury to your home with the natural beauty of marble without the price tag. Marble effect tiles are low maintenance too as well as being less porous, making them ideal for use in the bathroom and kitchen.

The timeless design appeal of marble is beautifully recreated with highly realistic marble effect tiles, with varying shades, detailing and veining as well as a natural finish.

Choose large wall tiles for minimum grout lines and maximum shine or opt for a contrasting strip to help break up a whole wall of tiles. For the ultimate in high end design, combine matching wall and floor tiles in the same colour for that touch of hotel chic.



Florence Gloss



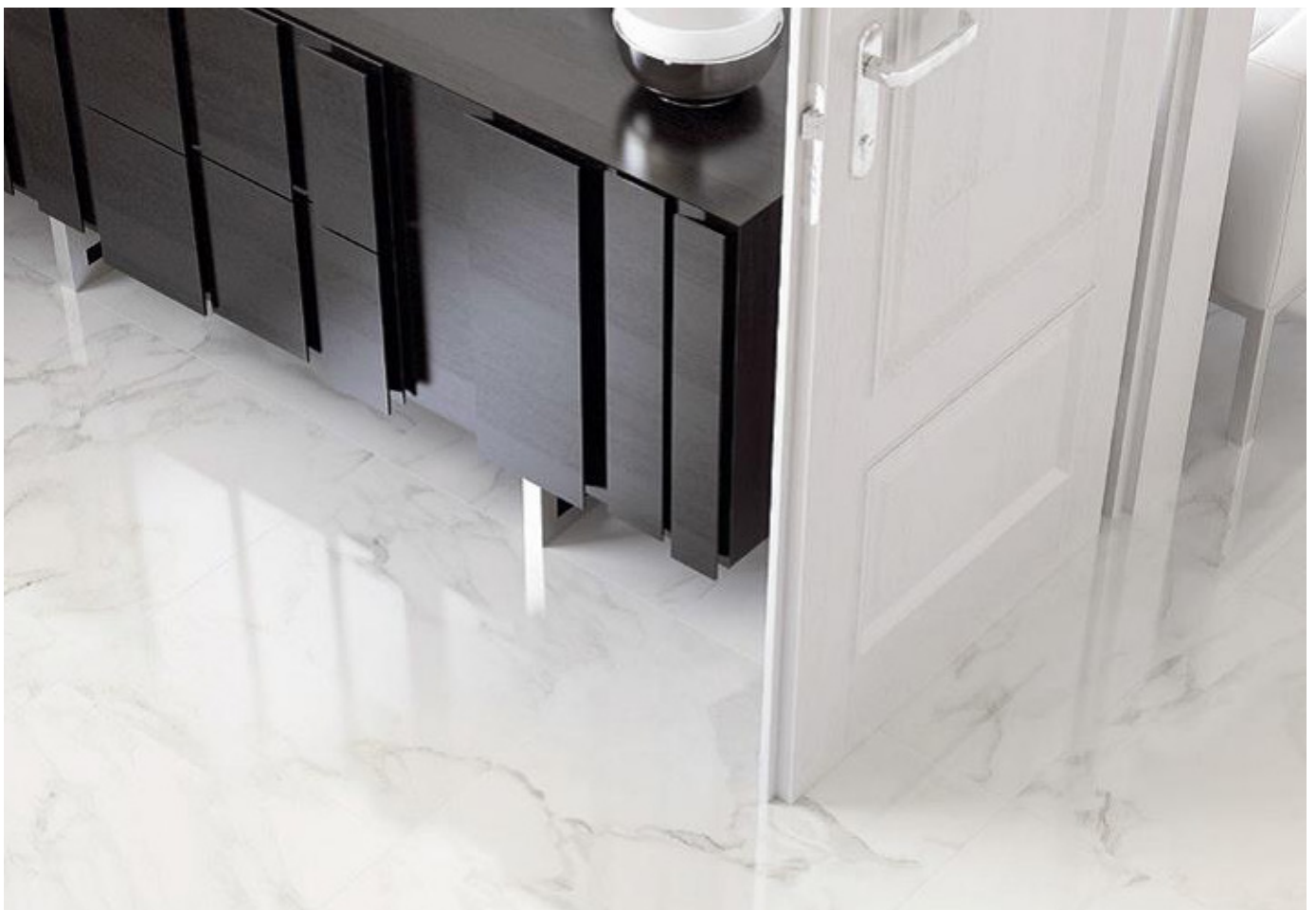
Amalfi Mix



Corinth Blanco Matt

# Stone Effect

Shine Cream



Stones Kalacata Carrara

# Stone Effect

Infinity Light Grey



## Concrete effect

An on-trend industrial concrete look can be perfectly re-created by choosing concrete effect tiles, a more versatile, durable and light-weight option.

With the choice of a semi-polished or matt finish in neutral shades and tones you can create a fabulous contemporary feel to your home. Concrete effect tiles will add more texture to the surfaces in the room, adding more depth to the overall design. Pair with plenty of greenery or natural furnishings to soften the look.



Titanium Blend White & Fuse Grey



Tour Grey

# Stone Effect

Downtown Light Grey

## Make areas flow

Concrete effect tiles can also be used to effectively link different zones in a large space such as the whole ground floor of your property. Use them throughout your living space to make one area flow effortlessly into another, creating a really open and spacious feel.



# Stone Effect

## Textured stone effect

If you're looking to introduce texture into your home then consider textured stone effect tiles. Often used as part of a feature wall these multi-dimensional tiles work best when the overall styling is kept simple and as part of a contemporary design scheme.



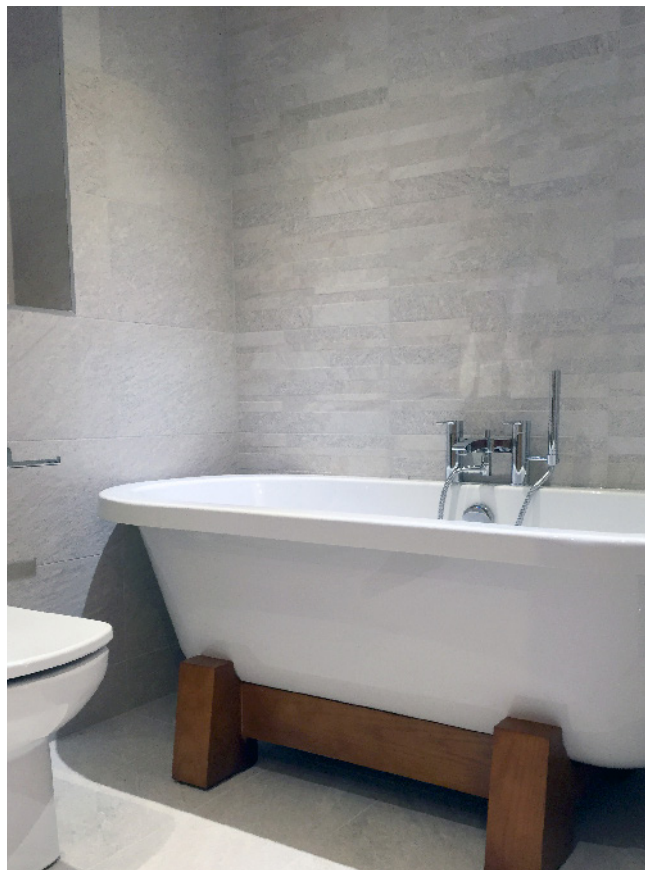
**Split Slate** Mosaic Quartz



**Gorge** White Muretto



**Bliss** Perla Hexagonal Decor



**Split** Grey Metro

# Stone Effect

Split Black



# Stone Effect

Cotswolds Celio Ivory

## Modular

Bring some rural charm into your home and choose modular tiles. With the variety of sizes offered with modular floor tiles, they are a flexible choice for any room in your home. You can create texture and interest with a regular and regimented pattern or adapt the design to suit your taste and your décor.

Modular floor tiles do away with long, straight lines. Depending on how you lay them, they create a pattern that works to maximise space because the eye doesn't follow the line to the edge of the room. Modular floor tiles are also often perfect for creating a stunning space that extends outside to the patio in one smooth transition. And although a little more planning is required, the results are worth it.



Cotswolds Celio Ivory



Lansdown Modular



Eternal Grey

# Stone Effect

Cotswolds Palatino Grey



# Tileflair at home

*We love to see how our customers use our stone effect tiles to transform their homes. See our social media channels for more examples of stunning room designs.*

## Split Slate Mosaic Quartz

Our **Split Slate Mosaic Quartz** stone effect tiles are spectacular in this garden. The clever use of these tiles has added some colour and interest to this outdoor space.



## Redcliffe Muretto

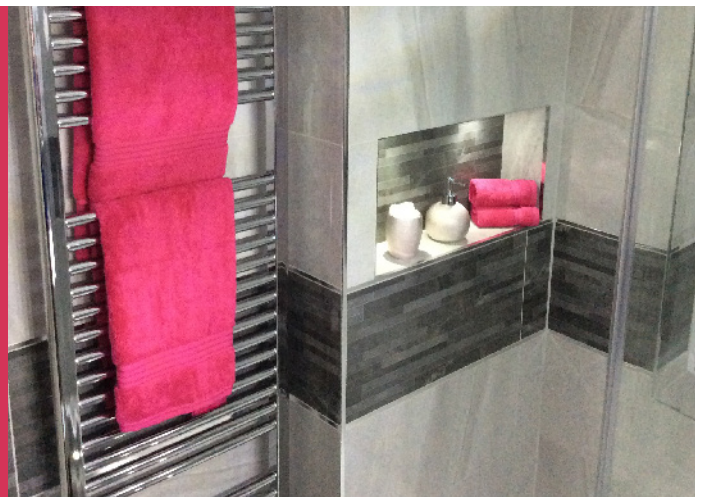
We love the contrast of the pattern on these **Redcliffe Muretto Decor** tiles against the crisp, white wall in this bathroom.

JMI Bathrooms



## Roubaix

The contrasting colour strip of **Roubaix Dark Decor** against **Roubaix Bone** is a great feature in this bathroom. We particularly love the decor used in the niche as well for that finishing touch. The perfect hotel chic bathroom.



# Create Something Beautiful

# Tileflair

Create Something Beautiful



Gris Claro (Light Grey)  
TEBK151  
150 x 75mm

## JOIN IN WITH OUR COMMUNITY

Connect with us



NEW  
EXCITING  
PROJECTS  
EVERY  
MONTH

## PROFESSIONAL ADVICE FROM THE EXPERTS

ADVICE AND  
BEST PRACTISE  
FROM THE  
EXPERTS



## BRINGING YOU THE LATEST TILE COLOURS AND STYLES

[www.tileflair.co.uk](http://www.tileflair.co.uk)

TOP TRENDS,  
LATEST  
TILE RANGES

## INSPIRATION FOR YOU

